



# Backup Storage Security Encryption

## ● ● ● Seamless . Reliable . Secure Improve Security by Protecting Data at Rest

Data security is undoubtedly the main concern of IT staff worldwide. Continuous headlines reveal the hundreds of companies that are affected by data breaches every year. According to the Identity Theft Resource Center, in 2008 there were over 656 security breaches affecting nearly 35.7 million individuals. Loss or stolen backup tapes contributed to a large number of these breaches. The protection of backup data is often overlooked. Many believe that the data is useless because it contains old information only used for disaster recovery. Even just one compromised backup tape can cost a company their reputation, competitive advantage, and thousands in fines.

Due to recent government regulations companies are now required by law to protect consumer's personal information. Regulations like HIPAA protect consumers by requiring that their critical personal data is secure at all times. California Senate Bill 1386 goes one step further by requiring that customers are notified immediately when there's a suspicion that their personal data has been compromised. This can be as simple as a tape lost in transit.

An alarming amount of companies worldwide have delayed the necessary steps they need to take to secure data at rest. Encryption is the only way to truly secure backup data. Many believe that the process of encryption is tedious, costly and slows down the network and backup procedures. This is no longer the case. Q<sup>3</sup>i is a tape drive with built-in encryption. The Q<sup>3</sup>i is extremely easy to install and can work with LTO 2 or 3 media for read, write and encryption.



# SECURITY

The Ponemon Research firm reported that data breaches cost companies an average of \$197 per compromised record in legal fees and other expenses.

Can your company afford not to secure your backup data?

### PCI COMPLIANCE

The Payment Card Industry Data Security Standard (PCI DSS) was created by the top 5 credit card companies to enforce a common set of security standards to protect cardholders. The Q<sup>3</sup>i appliance assists with PCI compliance by meeting **Requirement 3 - Protect stored card holder data.**

10ZiG goes one step further by offering technology upgrades to keep you PCI compliant regardless of the changes with the standards.

### SECURES YOUR BACKUP DATA

10ZiG's Q<sup>3</sup>i tape drive provides complete security for backup tapes with built-in encryption. It is the simplest, least intrusive high security tape device available. The appliance requires no system or software changes and can be used with LTO 2 or 3 media. Installation takes only minutes and key management is strong, yet simple.

It is so easy to setup, it overcomes the issue of sending data offsite unsecured. Simply send the Q<sup>3</sup>i with the encrypted backup tapes, then send the soft keys by a separate method. This way you don't risk data being compromised in transit to third party suppliers/customers.

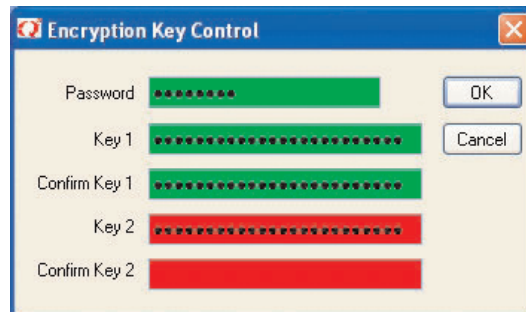
- Protect data in transit
- Secure transit of confidential data by commercial couriers
- Ensure data integrity of legal information
- Secure stored data
- Ensure patient record confidentiality

### PLUG AND PLAY SIMPLICITY

Installation of the Q<sup>3</sup>i appliance is as easy as 1, 2, 3.

1. Plug in the unit
2. Enter keys into GUI
3. Start encrypting!

No software changes with any host and any backup software with the appropriate interface.



Simply enter keys into the easy-to-use GUI and start encrypting.



# Backup Storage Security Encryption

## PRE-COMPRESSION

Encrypted data can't be compressed. Since compression is normally carried out on the tape drive itself the data must be compressed before it is encrypted or else the backup time will be affected significantly. The Q<sup>3</sup>i overcomes this limitation by compressing the data before it is encrypted.

## SIMPLIFIED, STRONG KEY MANAGEMENT

Key management is strong, yet simple, offering the highest level of security. Users enter their key(s) using the GUI program or a standard dumb terminal. An optional hardware key is available for stronger protection. This unique method adds further protection by requiring both the Q<sup>3</sup>i and your unique hardware key fitted before the data can be deciphered. In the event of another customer with a Q<sup>3</sup>i who has come across your keys, they still will be unable to read the data on the tape, as they don't have your unique hardware key.

## EASY TO MANAGE

The Q<sup>3</sup>i has a number of possible configurations and to simplify management of the unit, a GUI program is supplied allowing easy installation and control. Since everything being read from the drive is deciphered on-the-fly, you can restore the entire system, without needing to have the host software loaded from a different source.

## UNIQUE DUAL INTERLACED ENCRYPTION MODES

The Q<sup>3</sup>i offers the greatest level of security by providing unique dual interlaced extended DES data encryption, where the data is split into two streams and each stream is encrypted separately using 112-bit encryption allowing for 2.69 x 10<sup>67</sup> possible key combinations. The two streams of encrypted data are merged before the data is written to tape. To further strengthen security, if the device is stolen, the software key is lost after the unit has been without power for two minutes.

## RELIABLE

The Q<sup>3</sup>i tape drive is designed for reliability with minimal operational impact. You simply plug it in and forget about it. This is not the case for software encryption programs where constant maintenance is necessary.

# INTEGRITY

## HIGHLIGHTS

- Up to 800 Gbytes compressed capacity
- Unique dual interlaced extended DES encryption mode
- Works with any Host that has a SCSI LVD, SCSI HVD (Differential SCSI), iSCSI or Fibre interface
- Supports IPL from tape
- LCD Status information
- On-the-fly tape encryption
- GUI configuration software
- Transparent to operating system
- Works with any backup software
- Smart card key management option

## SPECIFICATION

<b>Encryption</b>	Dual Interlaced Extended DES
<b>Interface</b>	Ultra Fast Wide SCSI LVD, SCSI HVD, iSCSI, or Fibre Channel
<b>Configuration</b>	Windows GUI or serial terminal
<b>Options</b>	Table-top
<b>Power</b>	90-260 VAC
<b>Capacity</b>	800 GBytes compressed
<b>Write Compatibility</b>	LTO-2 & LTO-3
<b>Read Compatibility</b>	LTO-1, LTO-2, LTO-3
<b>Encryption Compatibility</b>	LTO-2 & LTO-3

PERFORMANCE



**100% SATISFACTION GUARANTEED**

Customer satisfaction is important to us, that's why we offer the most comprehensive guarantee policy in the industry.

Get the peace of mind and satisfaction you deserve with our **100% satisfaction guarantee**.

To learn more about our technology, compliance and 90-day satisfaction guarantee that comes standard with every Q<sup>3</sup>i purchase, visit us online at [www.theq3.com/guarantee.php](http://www.theq3.com/guarantee.php)

